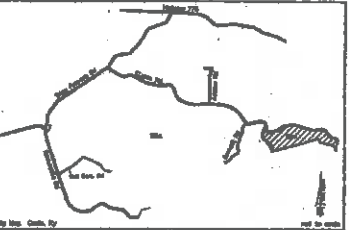
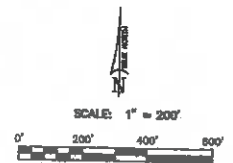
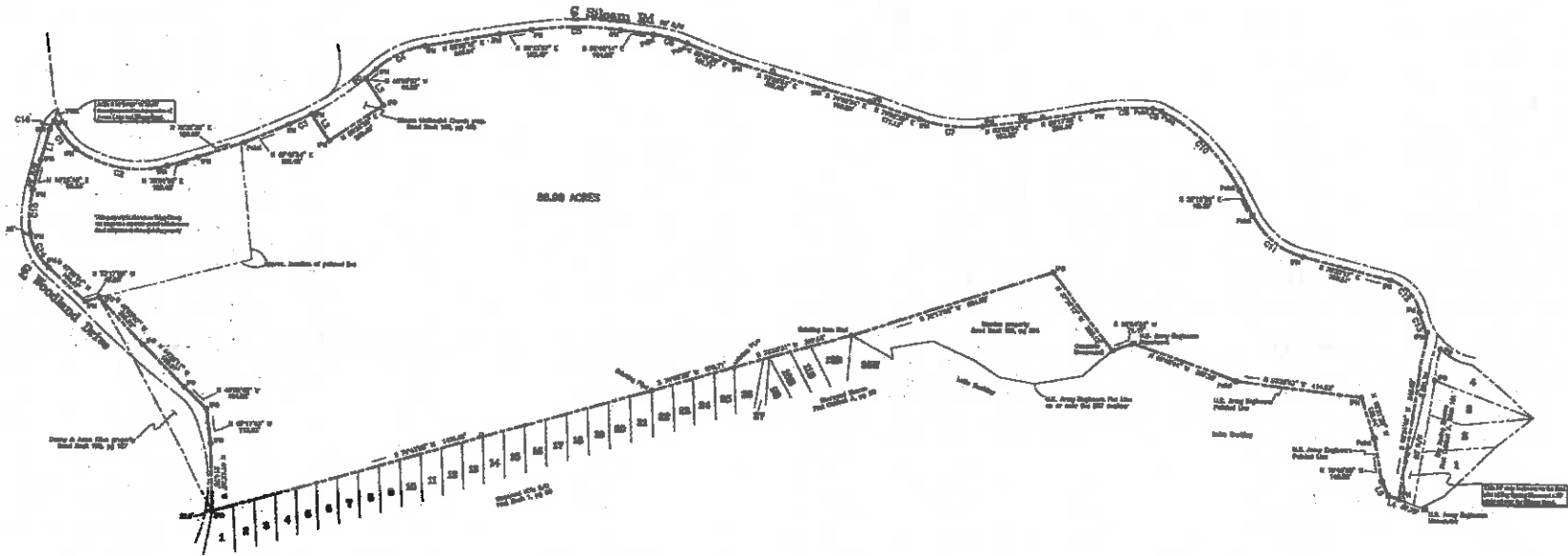


North

CHORD DATA	CHORD BEARING	CHORD LENGTH	CHORD BEARING	CHORD LENGTH
C1	114° 15' 00"	114.75	114° 15' 00"	114.75
C2	114° 15' 00"	114.75	114° 15' 00"	114.75
C3	114° 15' 00"	114.75	114° 15' 00"	114.75
C4	114° 15' 00"	114.75	114° 15' 00"	114.75
C5	114° 15' 00"	114.75	114° 15' 00"	114.75
C6	114° 15' 00"	114.75	114° 15' 00"	114.75
C7	114° 15' 00"	114.75	114° 15' 00"	114.75
C8	114° 15' 00"	114.75	114° 15' 00"	114.75
C9	114° 15' 00"	114.75	114° 15' 00"	114.75
C10	114° 15' 00"	114.75	114° 15' 00"	114.75
C11	114° 15' 00"	114.75	114° 15' 00"	114.75
C12	114° 15' 00"	114.75	114° 15' 00"	114.75
C13	114° 15' 00"	114.75	114° 15' 00"	114.75
C14	114° 15' 00"	114.75	114° 15' 00"	114.75
C15	114° 15' 00"	114.75	114° 15' 00"	114.75
C16	114° 15' 00"	114.75	114° 15' 00"	114.75
C17	114° 15' 00"	114.75	114° 15' 00"	114.75
C18	114° 15' 00"	114.75	114° 15' 00"	114.75
C19	114° 15' 00"	114.75	114° 15' 00"	114.75
C20	114° 15' 00"	114.75	114° 15' 00"	114.75
C21	114° 15' 00"	114.75	114° 15' 00"	114.75
C22	114° 15' 00"	114.75	114° 15' 00"	114.75
C23	114° 15' 00"	114.75	114° 15' 00"	114.75
C24	114° 15' 00"	114.75	114° 15' 00"	114.75
C25	114° 15' 00"	114.75	114° 15' 00"	114.75
C26	114° 15' 00"	114.75	114° 15' 00"	114.75

CHORD DATA	CHORD BEARING	CHORD LENGTH
C1	114° 15' 00"	114.75
C2	114° 15' 00"	114.75
C3	114° 15' 00"	114.75
C4	114° 15' 00"	114.75
C5	114° 15' 00"	114.75
C6	114° 15' 00"	114.75
C7	114° 15' 00"	114.75
C8	114° 15' 00"	114.75
C9	114° 15' 00"	114.75
C10	114° 15' 00"	114.75
C11	114° 15' 00"	114.75
C12	114° 15' 00"	114.75
C13	114° 15' 00"	114.75
C14	114° 15' 00"	114.75
C15	114° 15' 00"	114.75
C16	114° 15' 00"	114.75
C17	114° 15' 00"	114.75
C18	114° 15' 00"	114.75
C19	114° 15' 00"	114.75
C20	114° 15' 00"	114.75
C21	114° 15' 00"	114.75
C22	114° 15' 00"	114.75
C23	114° 15' 00"	114.75
C24	114° 15' 00"	114.75
C25	114° 15' 00"	114.75
C26	114° 15' 00"	114.75



I hereby certify that this survey has been made using the recorded information shown, and all in visible accordance, or was observed other than those shown, in this survey as shown, to the best knowledge and belief. This is in full compliance of the recorded plan and map of an accurate title search. I certify that this is a class II and that the ends of crosses, uncolored crosses is better than 2 as shown herein. The crosses are marked and the bearings and distances are as shown.

Legend
 B.C. or P.M. or Point
 Public Utility & Drainage Easement
 Minimum Building Setback Line
 Fence
 Checkered Line
 Boundary Line
 Iron Pin Old
 Iron Pin New
 E.A.M.G. Cont.
 M.P.S.L.

The public road right-of-way width here set by this survey is a standard width of 20' from the center line as recorded right-of-way here shown.
 * New iron pins are 1/2" diam diameter 11" long capped with a red plastic cap.

Property Survey For
Barrow & Byrd Properties
Pine Timber Wood Production,
Coastal Forest Investments, L
 Map 18, parcel 2 & 3
 Property Recorded in
 Deed Book 230, pg 356
 R. O. Trigg County
 Cadiz, Kentucky

WEAKLEY BROTHERS
 P.O. Box 5408 / 2121 Old Island City Rd
 Dicksboro, IN 37043 548-9425
 Land Surveying Civil Engineering

Siloam

North

